

■ Company Outline (as of March 31, 2011)



Headquarters
(AKIHABARA UDX Bldg. 11F)

Name
Hitachi Kokusai Electric Inc.

Address of Headquarters
4-14-1, Sotokanda, Chiyoda-ku,
Tokyo 101-8980, Japan

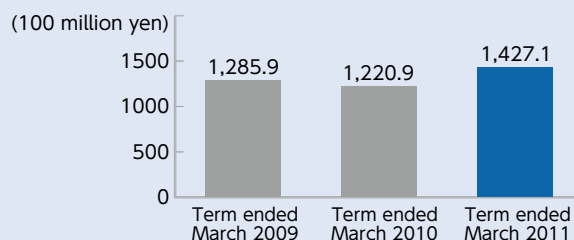
Founded
November 17, 1949

Capital
10,058 million yen

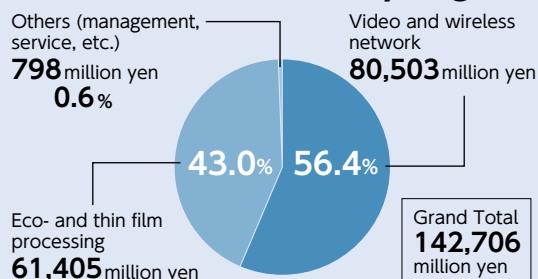
Sales
142,706 million yen
(consolidated)

Employees
5,280 (consolidated)

■ Consolidated Sales



■ Consolidated Sales by Segment



* The segmentation reflects our reorganization in April 2011.

■ Factories of the Company



Toyama Works

Main products: Eco- and Thin Film Processing Equipment

Located in Yatsuo-machi, Toyama, embraced by the Hida Highlands, this factory has a special-purpose clean room where semiconductor manufacturing equipment for the next-generation processes is developed, designed, and produced to meet the demanding needs of major users worldwide.



Hamura Works

Main products: Wireless Communication Equipment

Located in Hamura, Tokyo, covered with the cherry trees of "Hamura-zeki" and green vegetation along the Tama River, this factory develops, designs, and manufactures mainly wireless communication systems for governments and agencies—and explores frontiers by using our long cultivated core technologies such as high-frequency, high-power wireless equipment.



Koganei Works

Main products: Video and Wireless Network Systems

Located in Kodaira, Tokyo, retaining the old image of Musashino, this factory develops, designs, and produces wireless communication and information systems, and broadcasting and video systems. Engineers engaged in the fields of video and wireless network systems work here to create products befitting Hitachi Kokusai Electric.



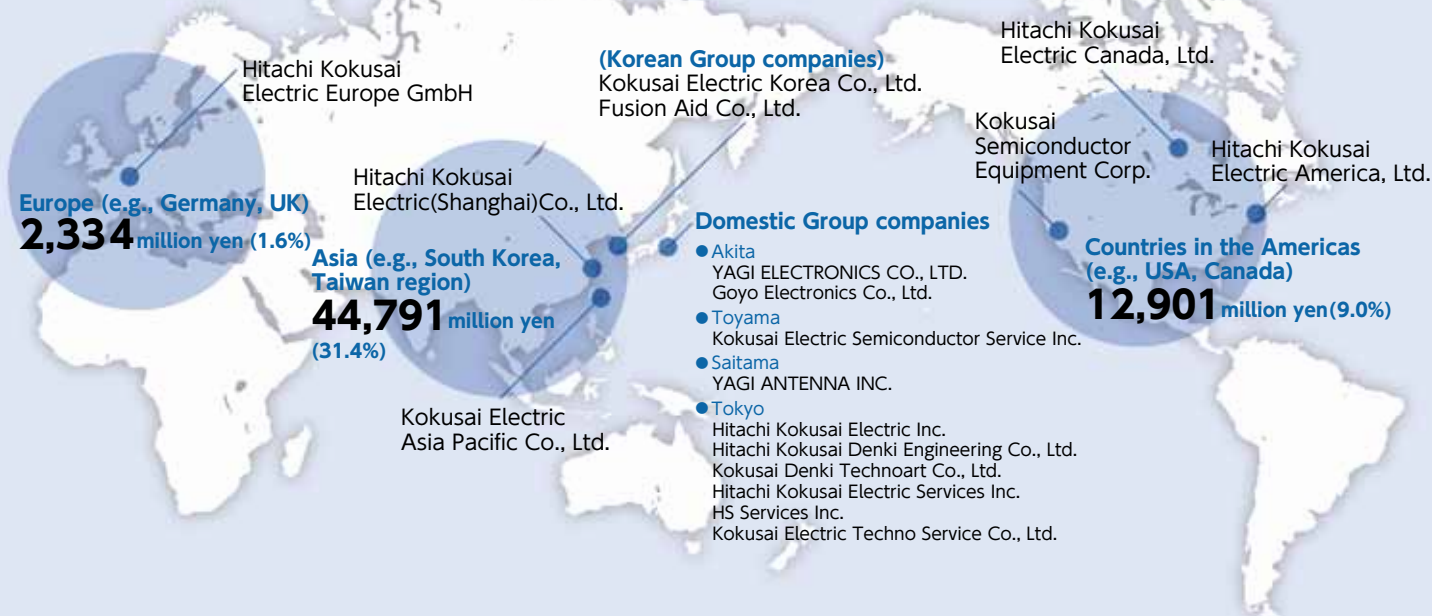
Sendai Branch Works

Main products: Video and Wireless Network Systems

The Shiroishi River originating in the Zao mountain range flows through Shibata-machi in Miyagi Prefecture on its way toward the Pacific Ocean. This is where we manufacture our video and wireless network systems.

■ Business Expansion of the Hitachi Kokusai Electric Group

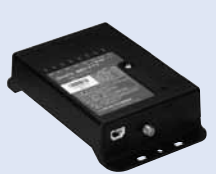
With its Group companies—ten in Japan and eight abroad—the Hitachi Kokusai Electric Group conducts business throughout Japan, as well as in Asia, North America, Europe, and other parts of the world.



■ Main Products

- Video and Wireless Network

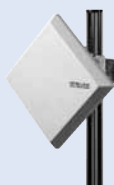
Wireless Communication, Information Processing, and Broadcasting Equipment, Receivers, Monitors, and Image Processors



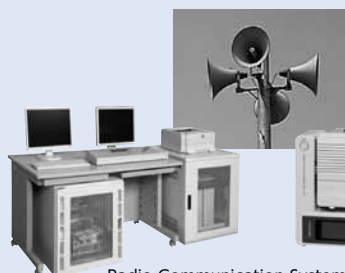
Radio Packet Communication Module



In-car Digital Radio Unit



High-speed Radio Repeater



Radio Communication System for Disaster Preventive Administration



Securities Information Display System



Broadcasting Color Camera



Tapeless System (Server system for broadcasting station operation)



Broadcasting Video Transmitter (FPU: Field Pick-up Unit)



ISnex®

Network-type Monitor Camera

* ISnex® is a registered trademark of Hitachi Kokusai Electric Inc.



PTZ Camera for Outdoor Use

- Eco- and Thin Film Processing

Semiconductor Manufacturing Equipment



Batch Epi-SiGe Equipment



Batch Thermal Process Equipment



Single Wafer Plasma Nitridation/Oxidation Equipment



Single Wafer Ashing Equipment

CONTENTS

Company Outline, Factories of the Company, and Business	1
Main Products, Editorial Policy, and Scope of this Report	2
Commitment of President and Chief Executive Officer	3

Special Report Engage our customers in considering and responding to social issues	5
---	---

Social Reports

With Our Customers

Creating a Society of Safety and Security	7
Pursue the Quality	9

With Our Business Partners

With the Community

With Our Colleagues

To Live Up to Society's Trust

Environmental Reports

Eco-Management (promoting environmental management)

Eco-Factories (eco-friendliness in production activities)

Evaluation of Environmental Activities

Eco-Products (Hitachi Eco-Products)

Editorial Policy

This report is intended to declare that the Hitachi Kokusai Electric Group considers earning the confidence and meeting the expectations of society through all its business activities as its corporate social responsibility (CSR), and to describe and report how it works to fulfill that responsibility. At the Group, we wish to make this report an opportunity to communicate, deepen mutual understanding, share our ideas and exchange information with our customers, business partners, colleagues, neighbors, stockholders and many other stakeholders. To that end, we narrow it down to the essential contents and items, thereby striving to make the report more readable and understandable.

Scope of this Report

Period:	The main period covered is Fiscal 2010 (from April 1, 2010, to March 31, 2011)
Companies:	Hitachi Kokusai Electric Inc. (the "Company" herein) and Group companies

Scope of Data: Indicated under each item.

Environmental impact and environmental accounting were tabulated based on data from the headquarters and production sites of the following two companies:

- Hitachi Kokusai Electric Inc.
- YAGI ANTENNA INC.

Next Issue

The next report is planned to be issued in June 2012.

Cover photos: The photos show the facial expressions of determined employees "engaging our customers in considering and responding to social issues."